

# Gemeinde Emmering

Bebauungsplan Nr. 550

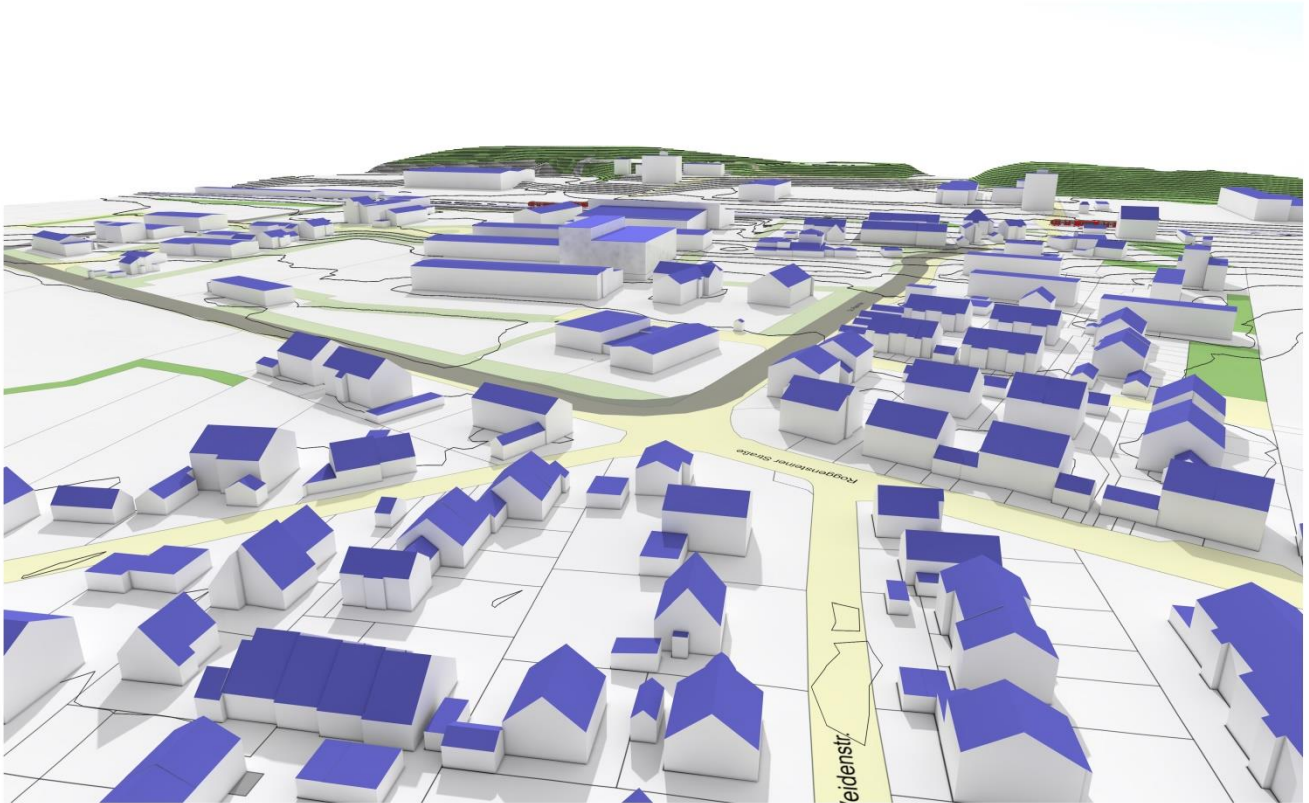
„Gewerbegebiet südlich der Roggensteiner Straße“

5. Änderung

24.03.2020

Anlage zur Begründung:

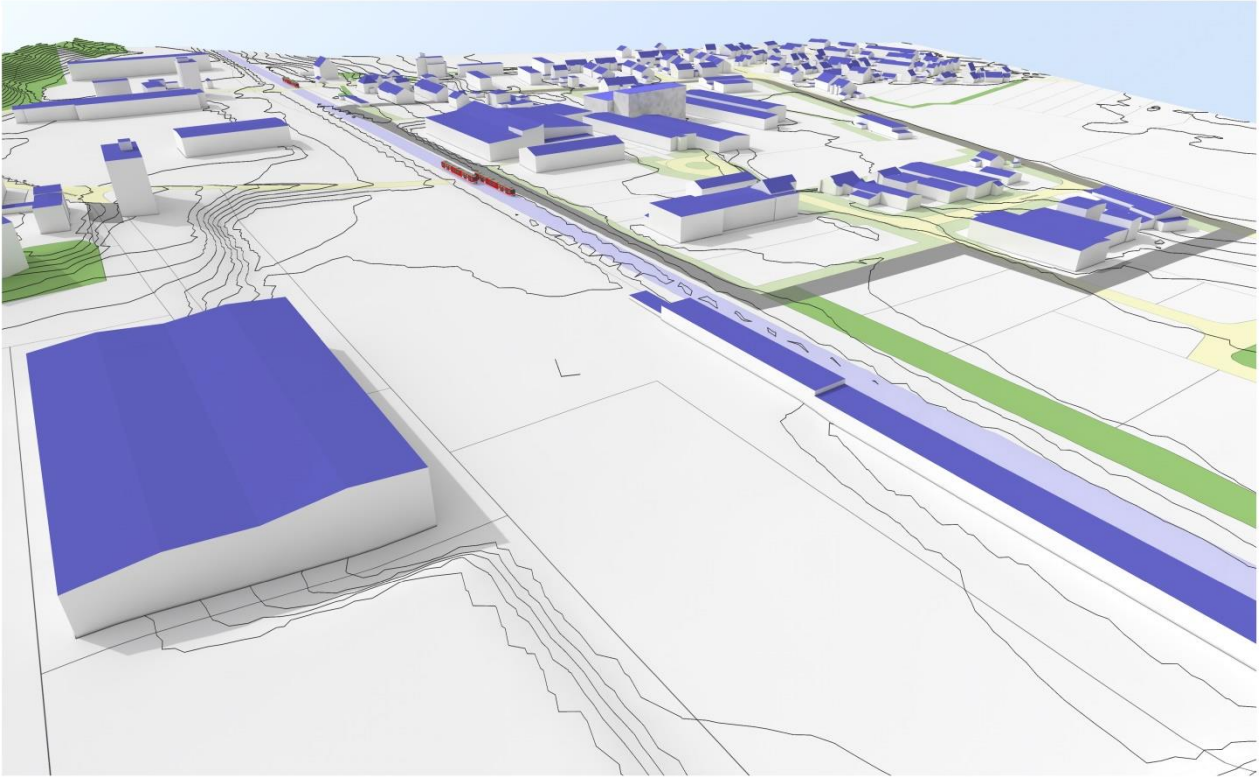
3D-Visualisierung des geplanten Hochregallagers



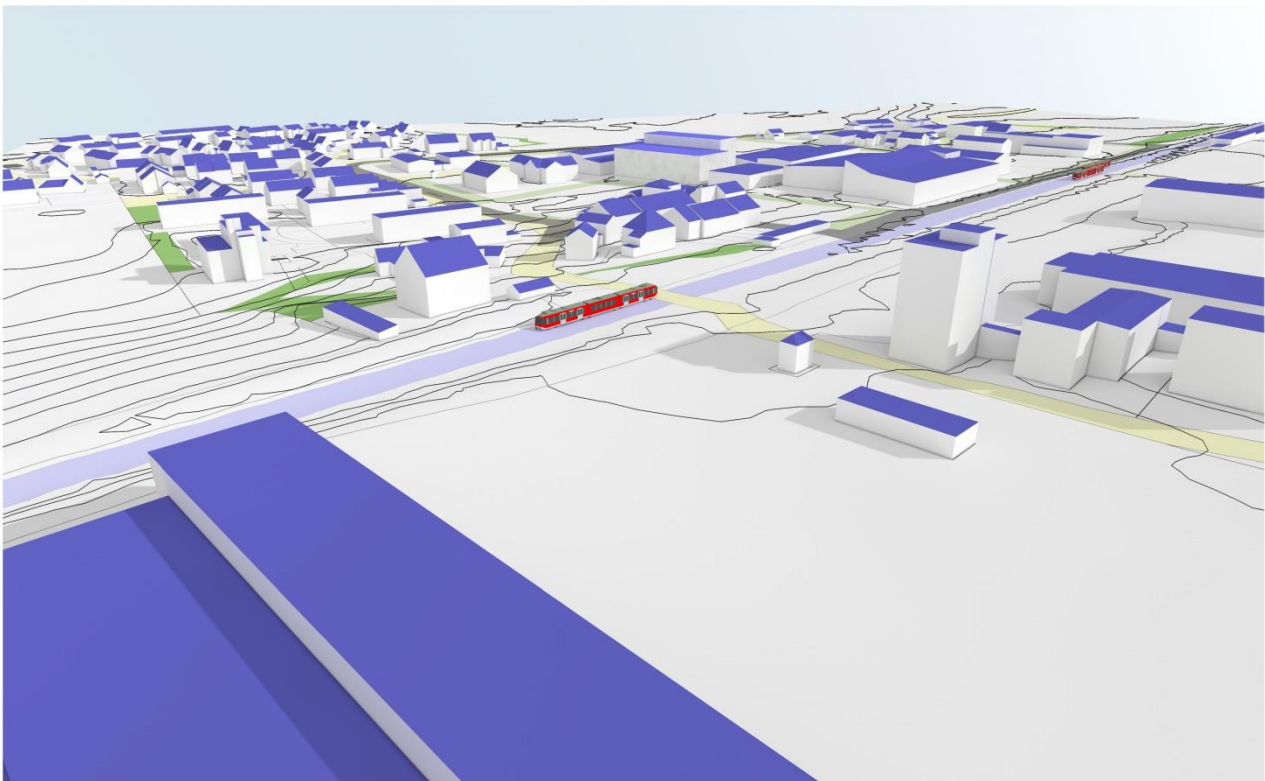
1. Luftperspektive - Nord-West



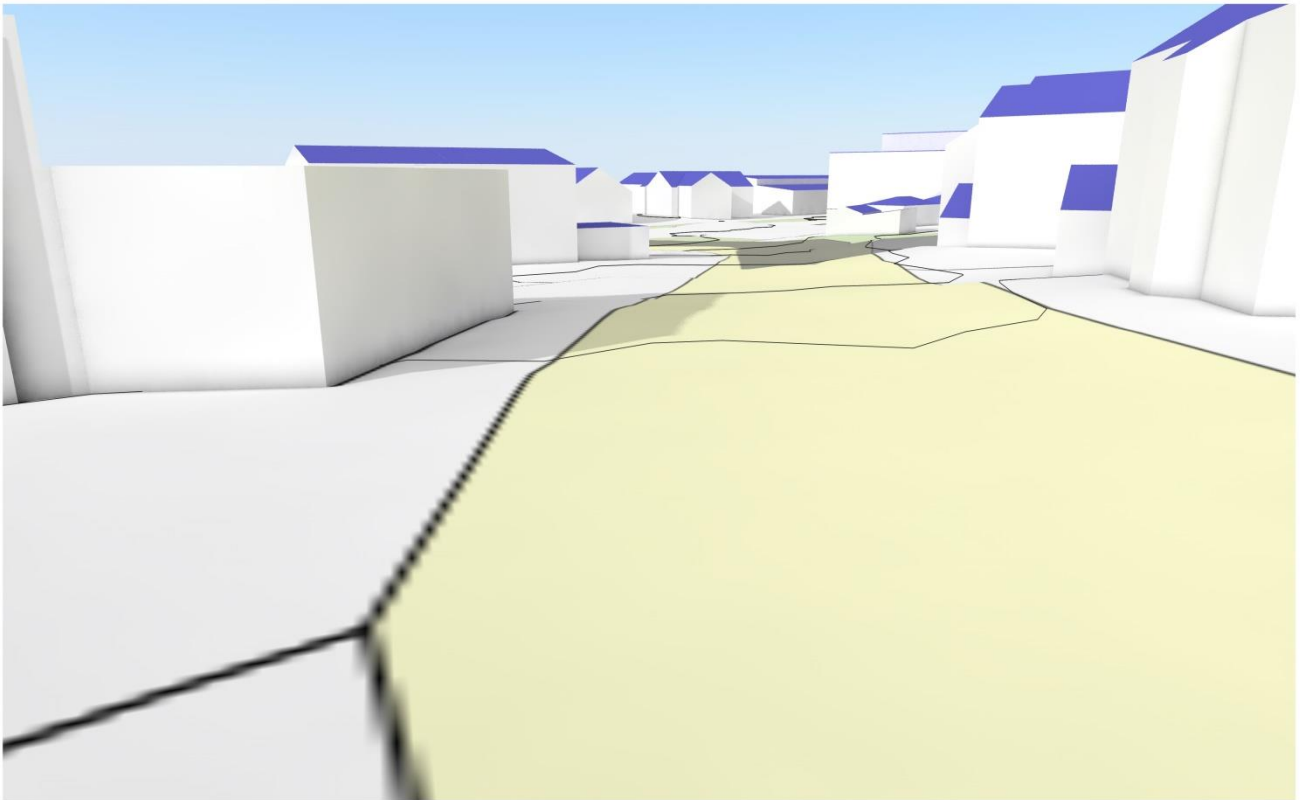
2. Luftperspektive - Nord-Ost



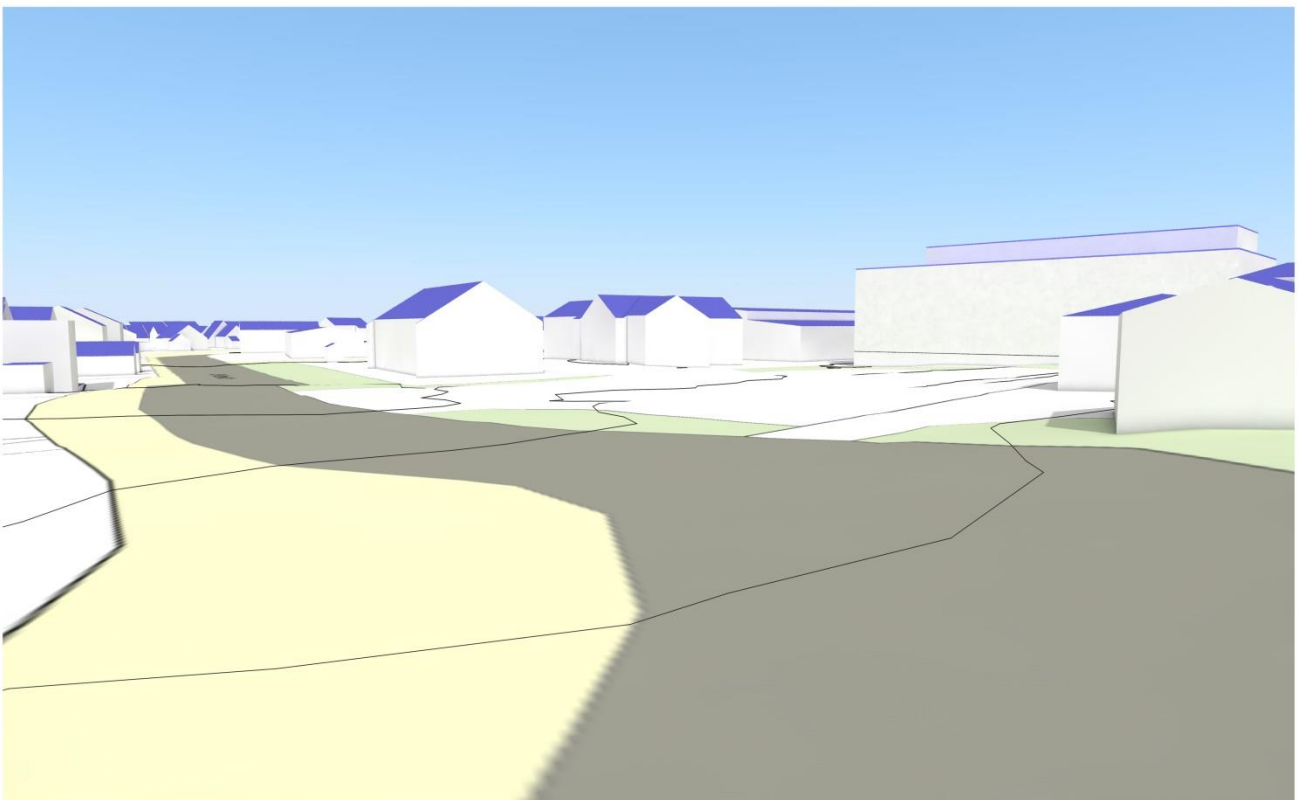
3. Luftperspektive - Süd-Ost



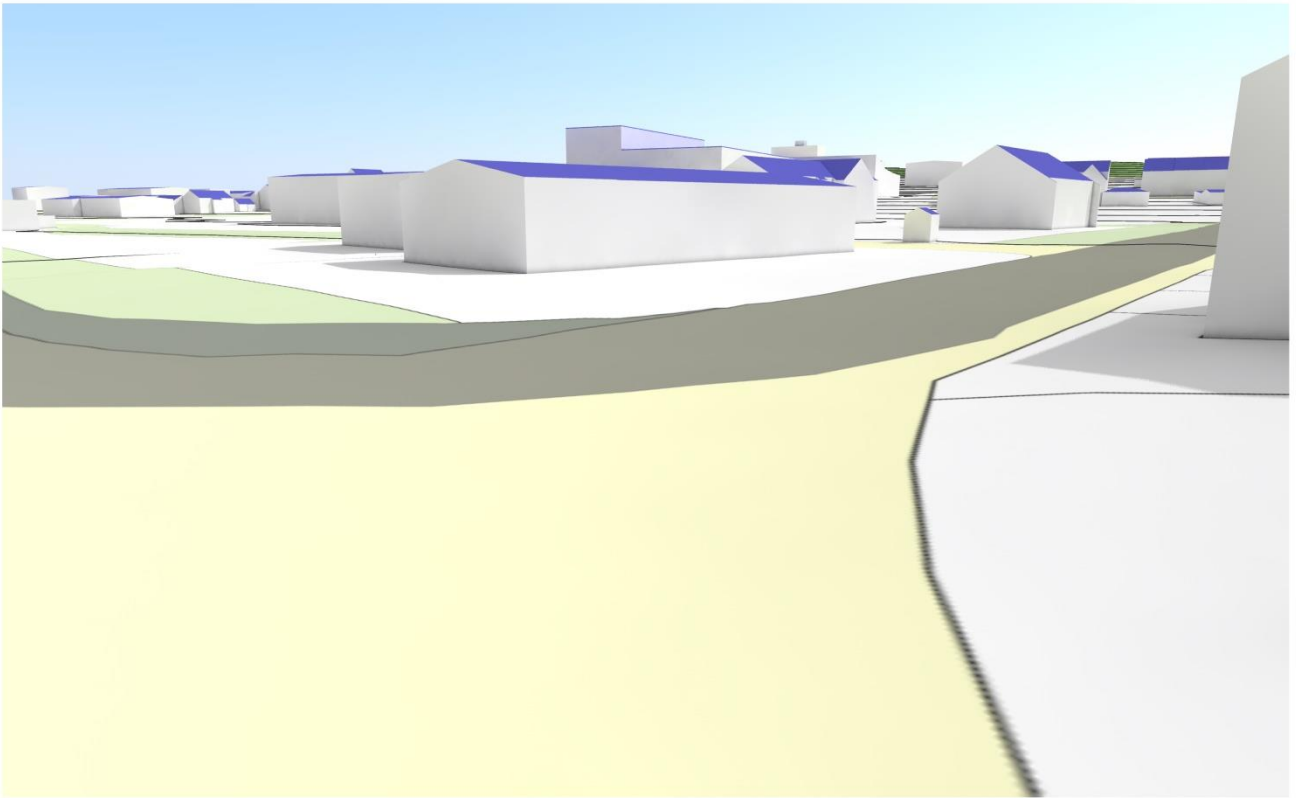
4. Luftperspektive - Süd-West



11. Augenperspektive - Dr.Rank-Straße (Süd)



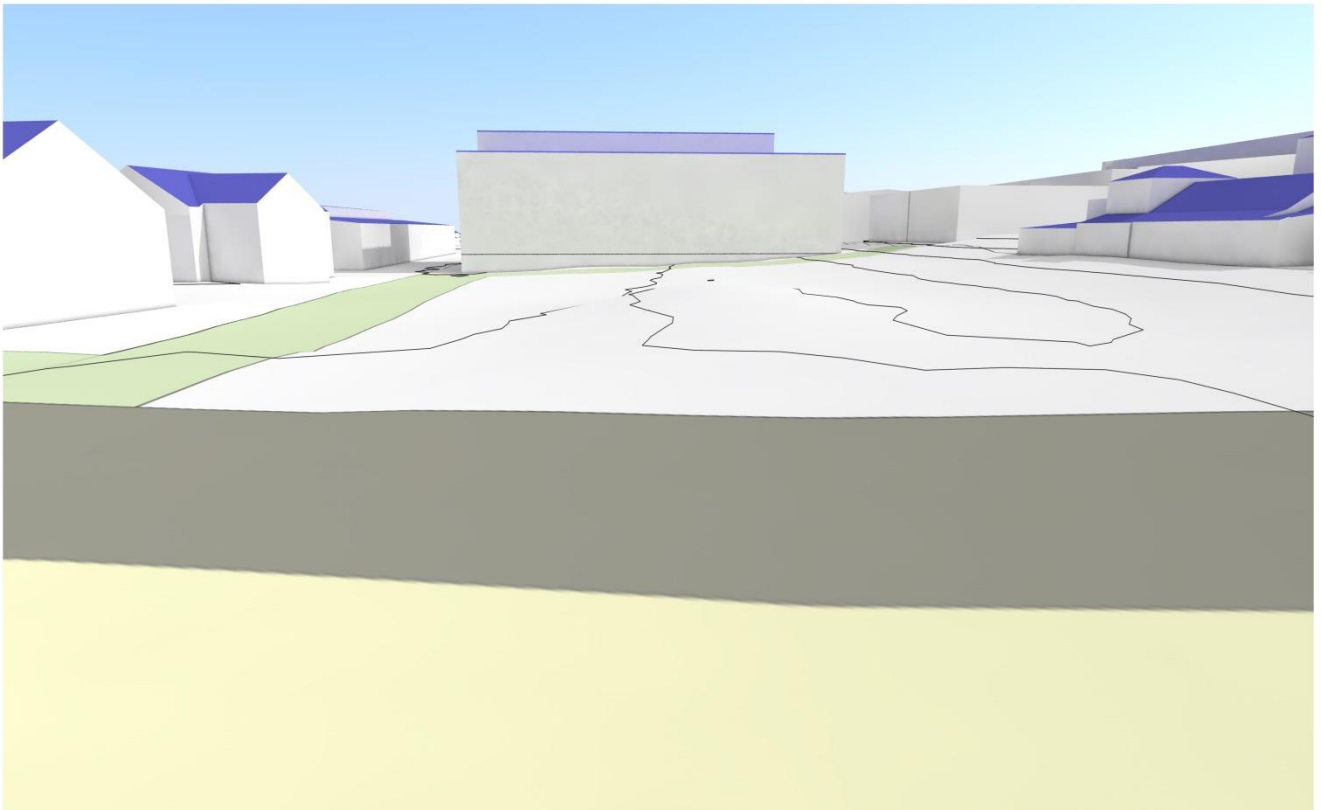
12. Augenperspektive - Dr.Rank-Straße (Süd)



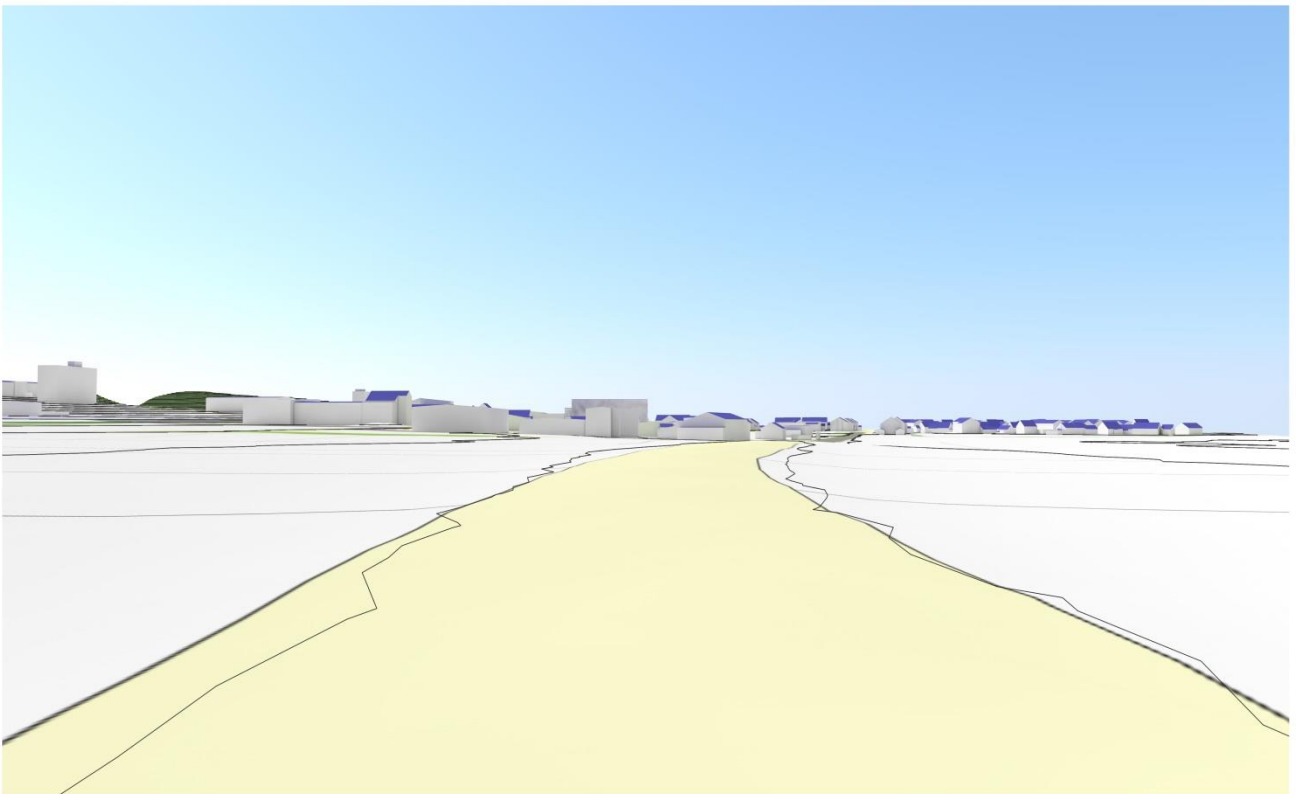
13. Augenperspektive - Dr.Rank-Straße (Nord)



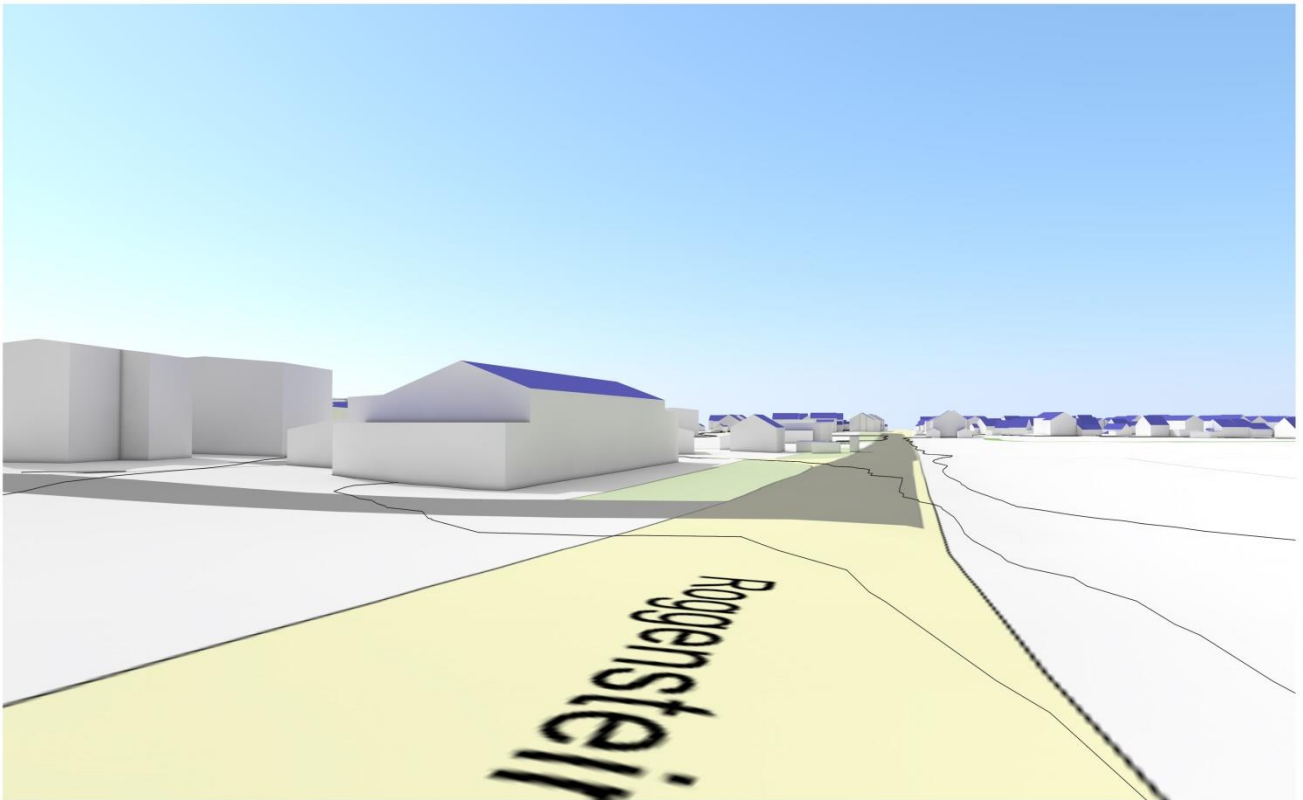
14. Augenperspektive - Dr.Rank-Straße (Nord)



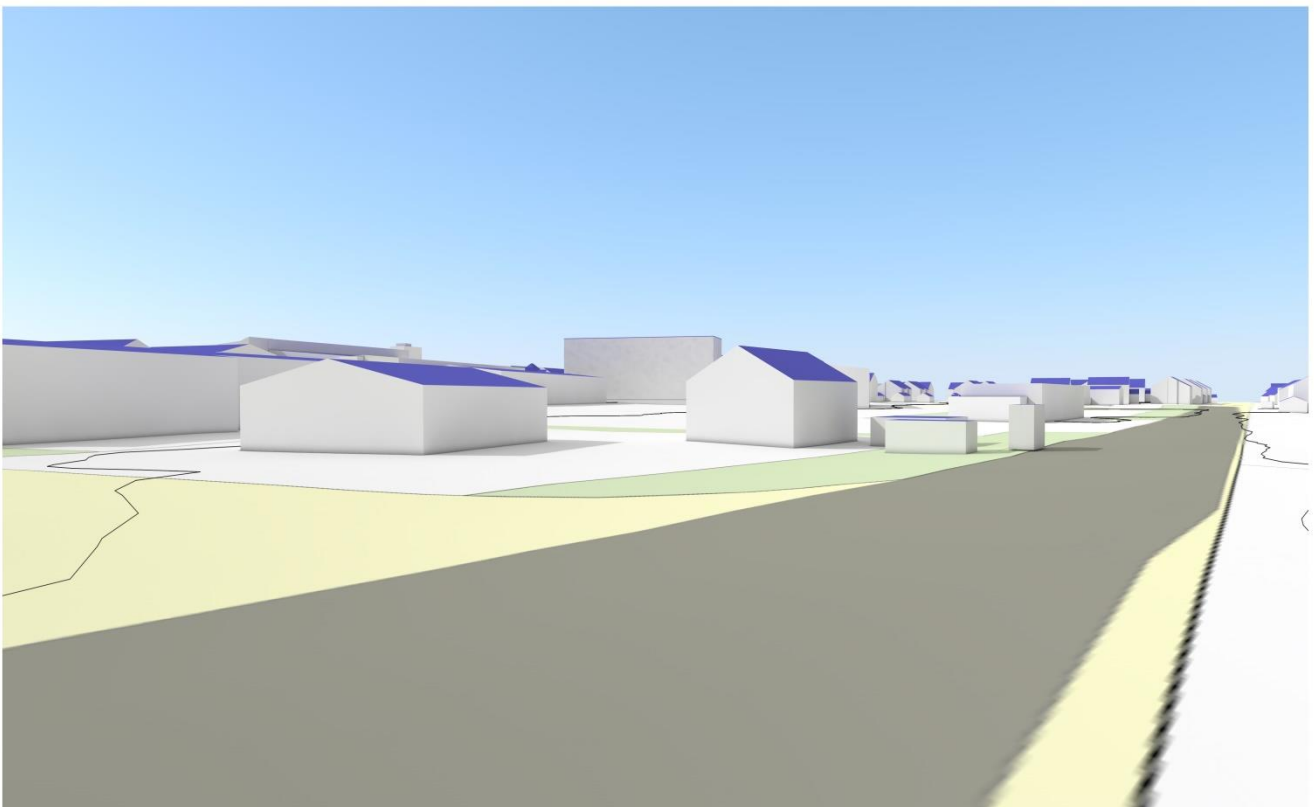
15. Augenperspektive - Dr.Rank-Straße (Nord)



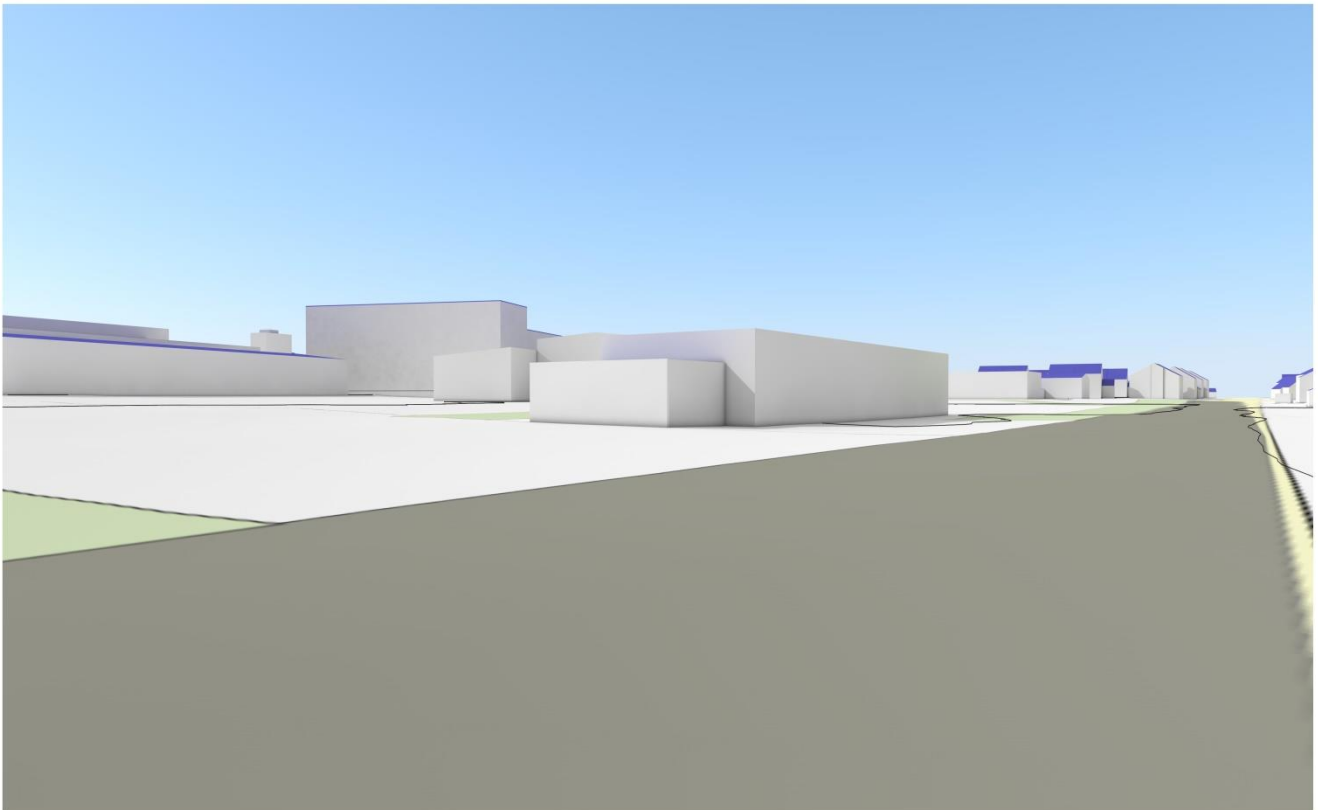
16. Augenperspektive - Roggensteiner Straße (Ost)



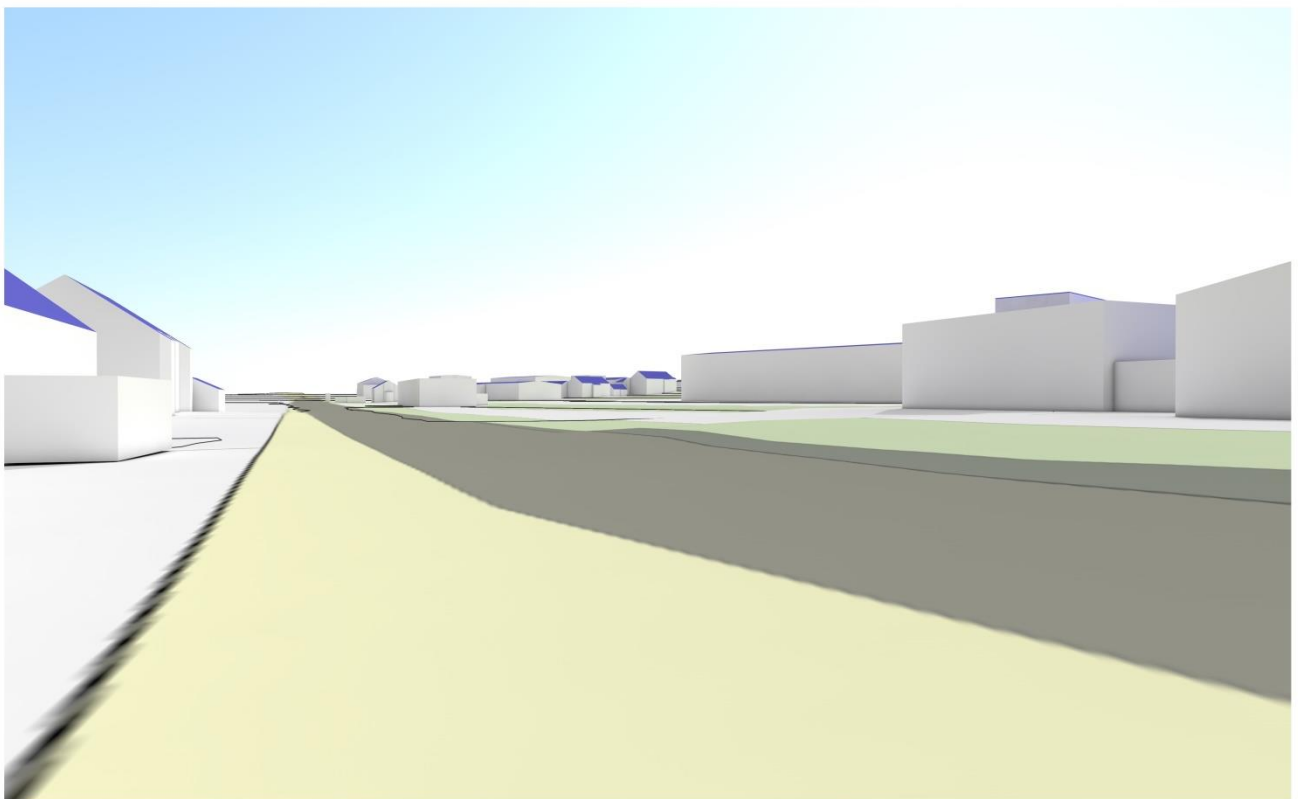
17. Augenperspektive - Roggensteiner Straße (Ost)



18. Augenperspektive - Roggensteiner Straße (Ost)

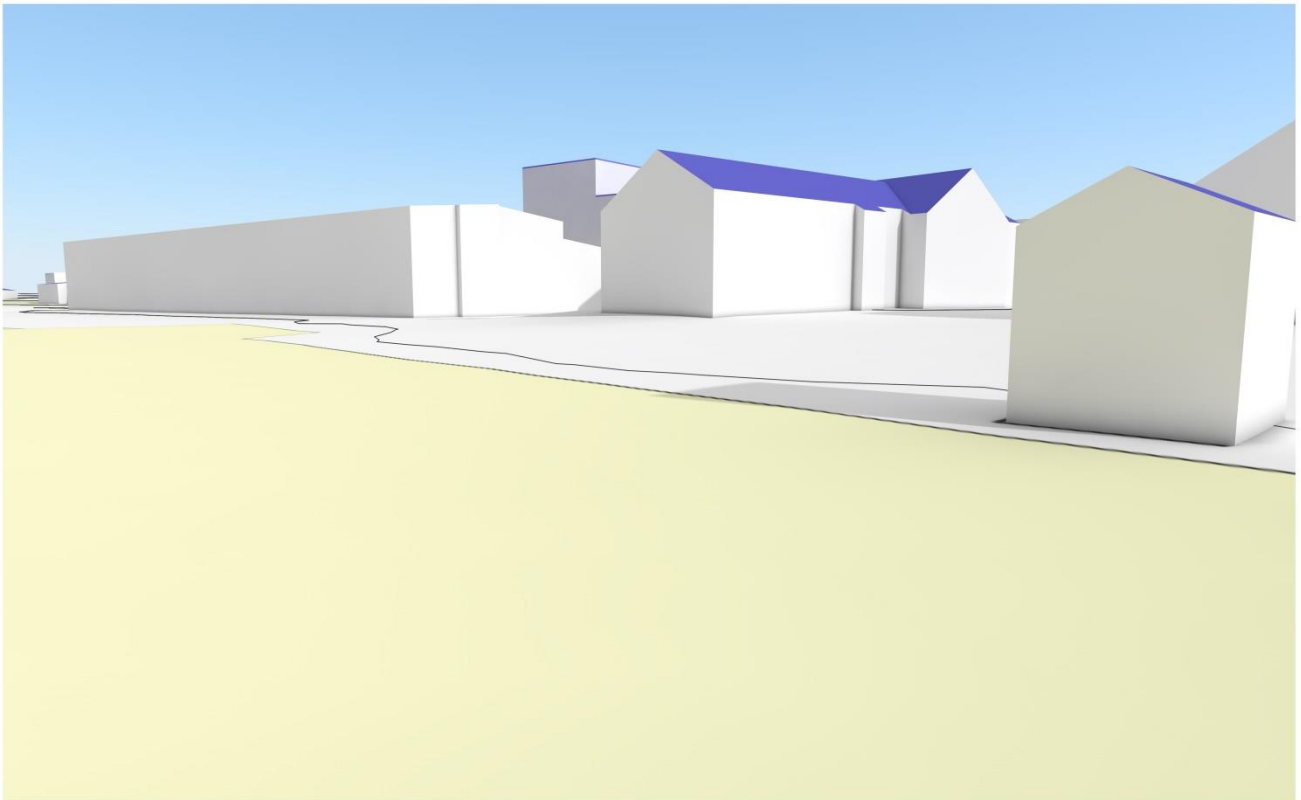


19. Augenperspektive - Roggensteiner Straße (Ost)

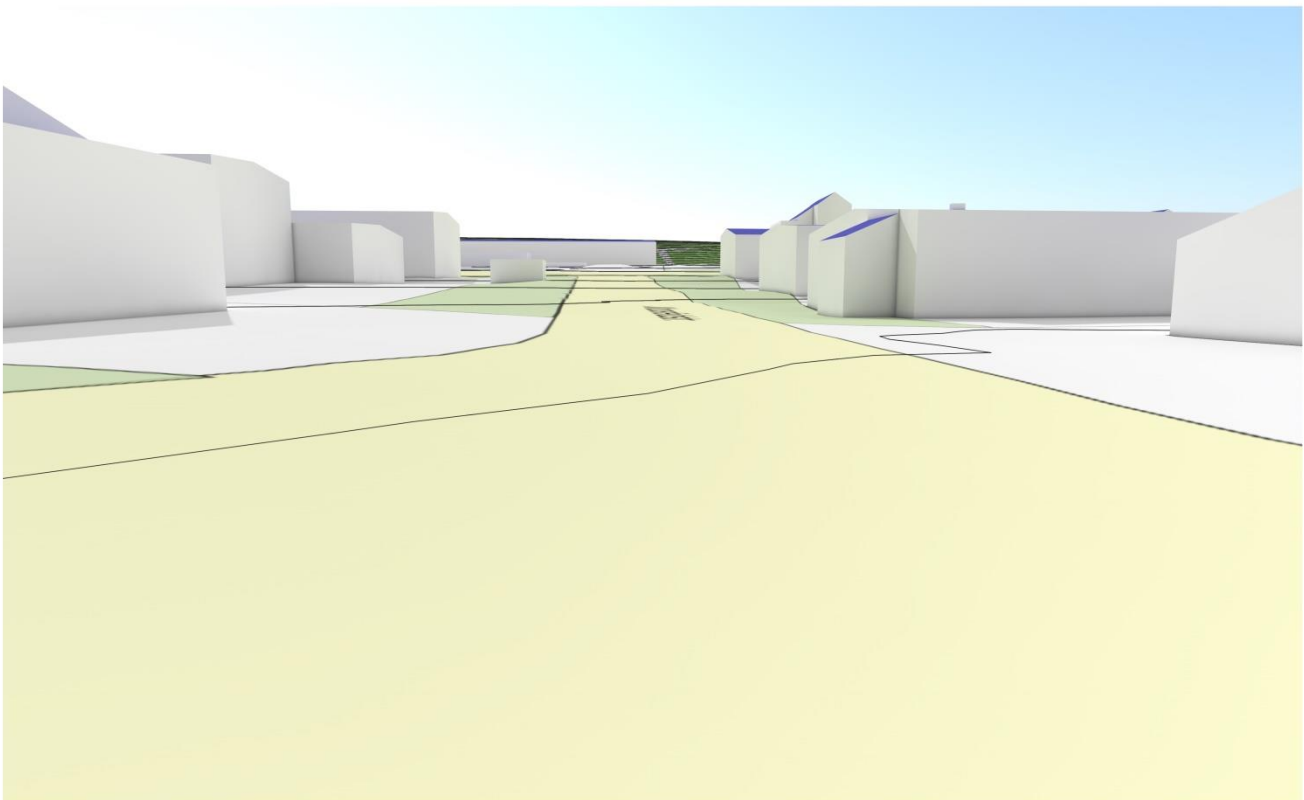


20. Augenperspektive - Roggensteiner Straße (West)

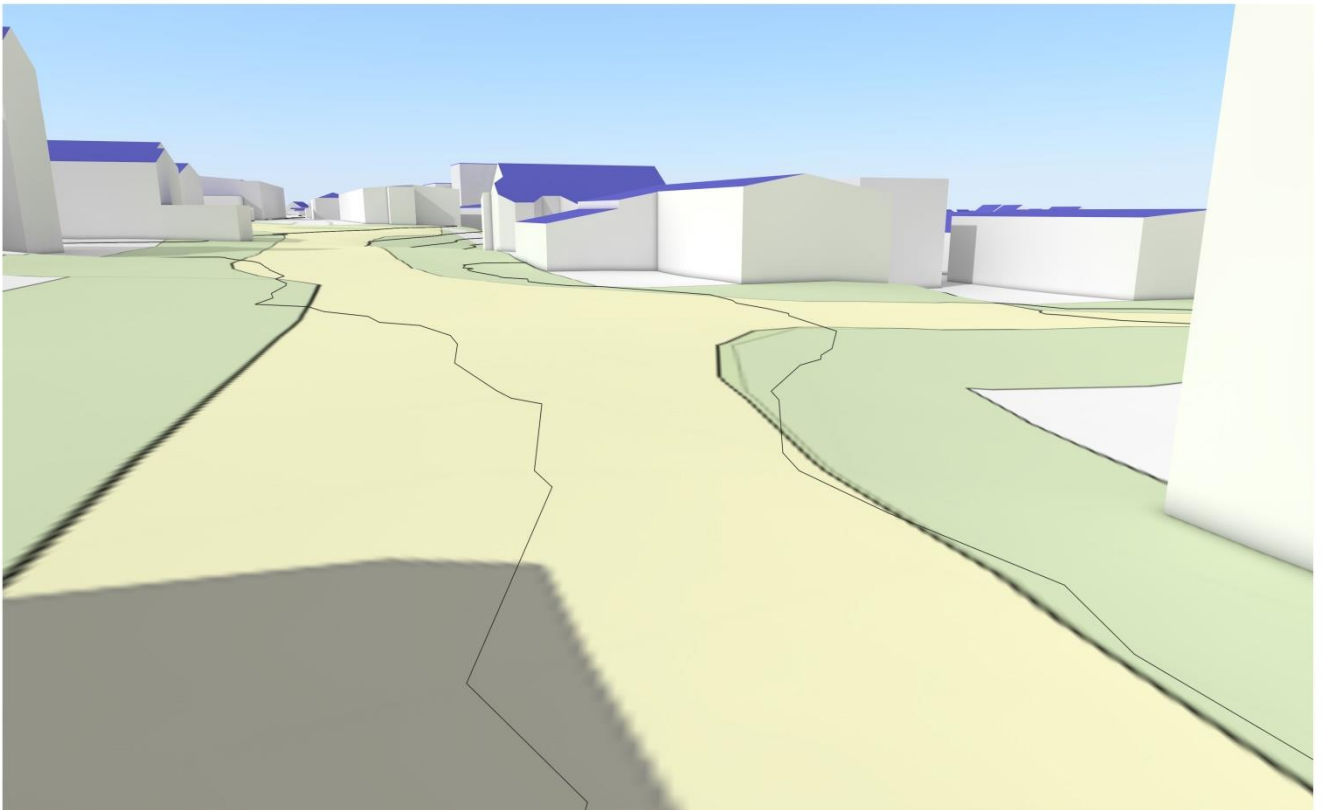




21. Augenperspektive - Roggensteiner Straße (West)



22. Augenperspektive - Moosfelderstraße (Nord)



23. Augenperspektive - Moosfelderstraße (Süd)